

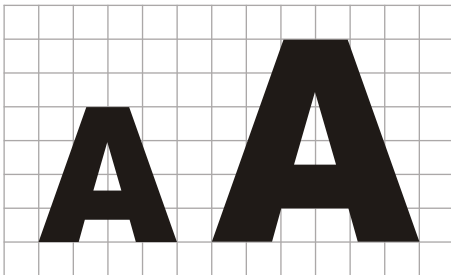
ARTWORK SUBMISSION GUIDELINES

CREATIVE DESIGN WORK

Although prices for creative work are not included here, we do offer graphic design services as well for an additional charge. Price will vary depending on the complexity and number of proofs that the design requires. Call for quotes.

FILE & ART PREP

- **Preferred Applications:**
 - **CorelDRAW X4**, Illustrator **Ai** (CS4), InDesign **ID** (CS4), Photoshop **Ps** (CS4)
 - When using InDesign please make sure to include all placed images, logos, fonts and other elements.
- **Vector:** CDR, AI, EPS, PDF files in any size (graphic proportional to the size ordered)
 - Provide all fonts or convert text to outlines, paths, or curves
 - Please also provide a JPG or PDF proof with vector file if possible



- **Raster/Bitmap (pixel based):** EPS, TIFF, JPG, PSD
 - 100-150 DPI at actual full size output
 - 200 DPI or higher at 50% scale
 - 300 DPI or higher at 25% scale
 - 300 DPI minimum (600-1200 DPI recommended) at 10% scale



www.afterburnerfx.com

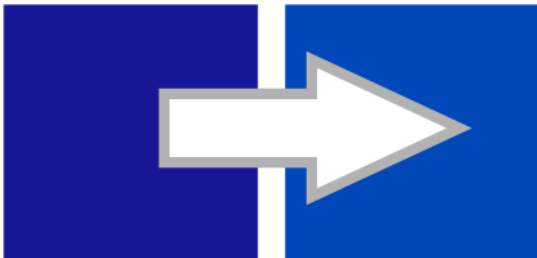
330-534-7653

800-540-0063

ARTWORK SUBMISSION GUIDELINES

COLOR MATCHING

We will make every effort to match designated colors, but due to variations in monitors and printers we cannot guarantee exact color match. To help with color accuracy it is recommended that vector files be sent with PANTONE colors set or that bitmap images be accompanied with a list of PANTONE colors to use as a guide when making printing adjustments. **If you do not have access to a PANTONE color book you may also send us a hardcopy printout or sample that demonstrates the colors you're looking for in your design.**



PROOFS

Whether we design for you or you submit a file, a full color proof will be submitted to you for final review and approval before printing.



**3600 SCHOTTEN RD.
HUBBARD, OH 44425**

www.afterburnerfx.com

330-534-7653

800-540-0063